



Presentation to The Association for the Chronically Mentally Ill (ACMI)



Mike Sheldon, MPA

CEO, Arizona State Hospital

Deputy Director, Arizona Department of Health Services



ARIZONA DEPARTMENT
OF HEALTH SERVICES

Health and Wellness for all Arizonans

Date: Nov. 5, 2024

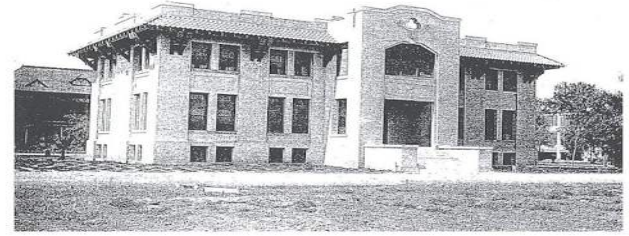
Agenda

- Brief Overview of the Hospital
- FY 2024 Highlights and Accomplishments
- Opportunities for Improvement
- Long Term Strategic Focus



Early History

- ❖ 1887 - Asylum opens with 61 patients
- ❖ 1911 - A fire destroyed all but one building
- ❖ 1913 - The hospital was rebuilt
- ❖ 1940 - Medication was introduced; the first social worker was hired
- ❖ 1958 - Officially named the "Arizona State Hospital"
- ❖ 1970 - Senate Bill 1057 establishes the civil commitment procedure
- ❖ 1980's - Arnold v. Sarn, a lawsuit that Arizona had failed to meet its obligation to the mentally ill – Civil Census Cap Established



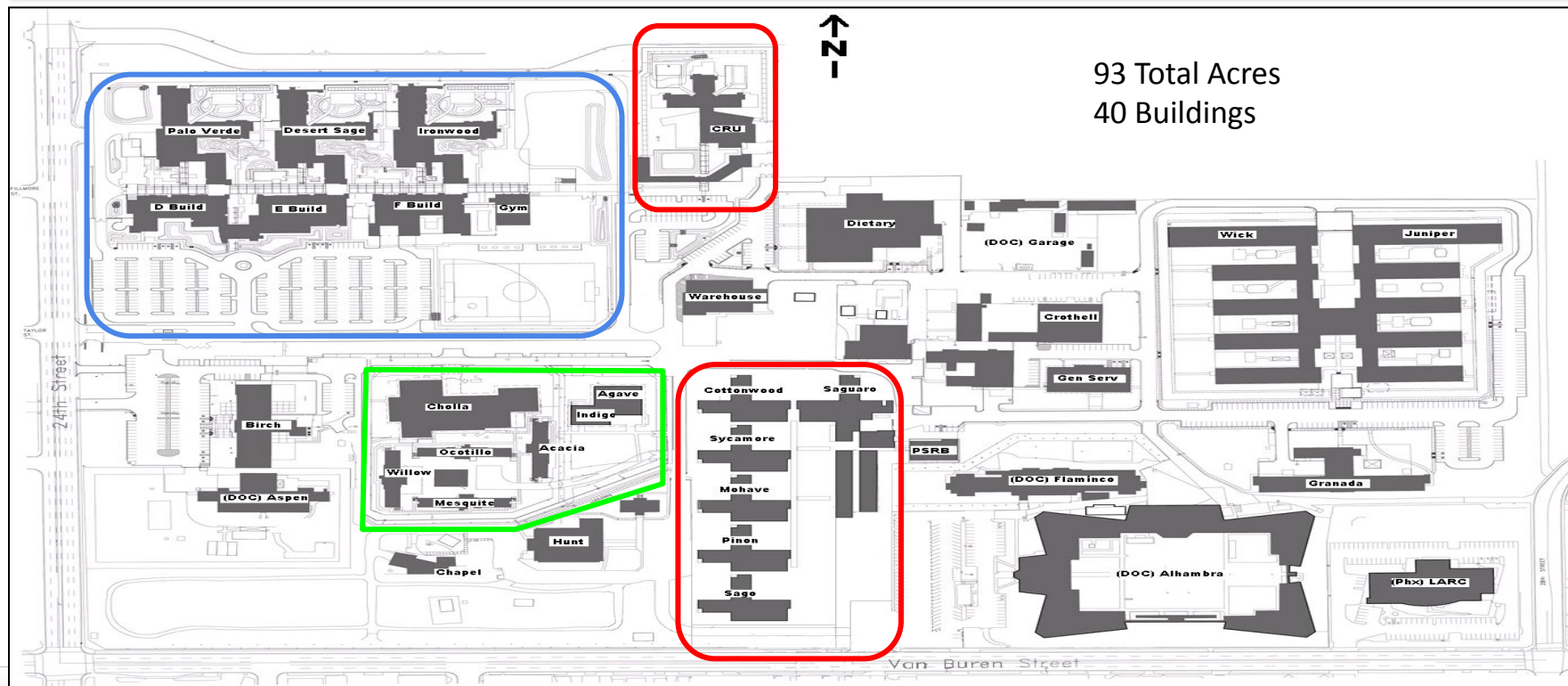
The Mahoney Building 1912



ARIZONA DEPARTMENT
OF HEALTH SERVICES

Health and Wellness for all Arizonans

Campus Map



ARIZONA DEPARTMENT
OF HEALTH SERVICES

Health and Wellness for all Arizonans

Recent History



- ❖ 2002 - Civil Hospital opens
- ❖ 2012 - Forensic Hospital Opens

Location

Location

Location

A Major Asset for Arizona!



ARIZONA DEPARTMENT
OF HEALTH SERVICES

Health and Wellness for all Arizonans

What We Provide

Living space:

- ❖ Bank
- ❖ Co-ed units with single & double bedrooms
- ❖ Café
- ❖ Clothing store
- ❖ Dayroom
- ❖ Dining Halls
- ❖ Fitness Center
- ❖ Gift Shop
- ❖ Gymnasium
- ❖ Library
- ❖ Nursing station
- ❖ Point store
- ❖ Pool
- ❖ Post Office
- ❖ Quiet room
- ❖ Treatment rooms



Programming:

- ❖ Psychotherapy
- ❖ Med. Management
- ❖ Music Therapy
- ❖ Karaoke
- ❖ Gardening
- ❖ Art/Crafts
- ❖ Community Meetings
- ❖ Recovery Groups
- ❖ Resolution Group
- ❖ Task Skills
- ❖ Book Club
- ❖ AA / NA
- ❖ Healthy Habits
- ❖ Tai Chi
- ❖ Nursing Services
- ❖ Open Art
- ❖ Circuit training
- ❖ Outings
- ❖ Patient Forums
- ❖ Primary Physical Health Services



ARIZONA DEPARTMENT
OF HEALTH SERVICES

Health and Wellness for all Arizonans

Staffing

- ❖ Executive Management and Administrative staff
- ❖ Assistant Attorney Generals/ Legal staff
- ❖ Behavioral Health Technicians
- ❖ Medical Doctors, Dentist & Podiatrist
- ❖ Facilities/Maintenance staff & Housekeeping
- ❖ Nutritionists & Food Services
- ❖ Hospital Security
- ❖ Nursing
- ❖ Pastors
- ❖ Pharmacy staff
- ❖ Psychiatrists (Providers)
- ❖ Psychologists
- ❖ Quality Management
- ❖ Compliance
- ❖ Rehab
- ❖ Social Workers
- ❖ Therapists
- ❖ Treatment Plan Coordinators



Current Headcount:~620



ARIZONA DEPARTMENT
OF HEALTH SERVICES

Health and Wellness for all Arizonans

Civil Hospital



ARIZONA DEPARTMENT
OF HEALTH SERVICES

Health and Wellness for all Arizonans

Civil Hospital – Patient Demographics

| 2024 State Fiscal Year – Civil Campus | | | Total Unique Patients Served: 146 | | |
|---------------------------------------|----------------|---------------------------|-----------------------------------|-------------------------|----------------|
| <i>Gender</i> | <i>Percent</i> | <i>Race</i> | <i>Percent</i> | <i>Length of Stay</i> | <i>Percent</i> |
| Male | 68% | American Indian | 5.6% | < 1 year | 18.5% |
| Female | 32% | Asian | <1% | 1 to 5 years | 53.4% |
| | | African American | 18.2% | 6 to 10 years | 6.8% |
| <i>Age Group</i> | <i>Percent</i> | Caucasian | 55.2% | 10 to 20 years | 13% |
| 18-21 | <1% | Other / Unknown | 20.3% | 20+ years | 1% |
| 22-29 | 14% | | | | |
| 30-39 | 38.5% | <i>County of Origin**</i> | <i>Percent</i> | <i>Admission Status</i> | <i>Percent</i> |
| 40-49 | 26.6% | Maricopa | 51.7% | First Admission | 46.8% |
| 50-59 | 11.2% | Pima | 33.6% | Readmit to ASH | 30.1% |
| 60+ | 9.8% | Other | 14.7% | Discharged in SFY | 21.7% |

**Data represents the original county issuing the court order for treatment, but does not necessarily represent the county of residence.



ARIZONA DEPARTMENT
OF HEALTH SERVICES

Health and Wellness for all Arizonans

Forensic Hospital



ARIZONA DEPARTMENT
OF HEALTH SERVICES

Health and Wellness for all Arizonans

Forensic Hospital – Patient Demographics

| 2024 State Fiscal Year – Forensic Campus | | | Total Unique Patients Served: 149 | | |
|--|----------------|---------------------------|-----------------------------------|-------------------------|----------------|
| <i>Gender</i> | <i>Percent</i> | <i>Race</i> | <i>Percent</i> | <i>Length of Stay</i> | <i>Percent</i> |
| Male | 84.7% | American Indian | 3.3% | < 1 year | 24% |
| Female | 15.3% | Asian | 3.3% | 1 to 5 years | 32% |
| | | African American | 9.3% | 6 to 10 years | 25% |
| <i>Age Group</i> | <i>Percent</i> | Caucasian | 66.7% | 10 to 20 years | 15% |
| 18-21 | 2% | Other / Unknown | 17.4% | 20+ years | 3% |
| 22-29 | 8.7% | <i>County of Origin**</i> | <i>Percent</i> | <i>Admission Status</i> | <i>Percent</i> |
| 30-39 | 28.7% | Pima | 36% | First Admission | 57.7% |
| 40-49 | 24% | Maricopa | 25% | Readmit to ASH | 18.1% |
| 50-59 | 14% | Yavapai | 9% | Readmit CR | 6.7% |
| 60+ | 22.7% | Other | 30% | Discharged in SFY | 18.1% |

**Data represents the original county issuing the court order for treatment, but does not necessarily represent the county of residence.



ARIZONA DEPARTMENT
OF HEALTH SERVICES

Health and Wellness for all Arizonans

Little-Known Facts!

- ASH is classified as an Institution for Mental Diseases (IMD).
 - We are largely unable to bill for services.
- Civil patients designated as SMI continue to be eligible for physical health care under an AHCCCS health plan.
- Forensic patients lose all medicaid eligibility during their stay
- Hospital operations are financed through the General Fund
 - Programmatic expansions or enhancements require Legislative and Executive support.
- Limited operational flexibility compared to other hospitals.



Highlights and Accomplishments

FY2024



ARIZONA DEPARTMENT
OF HEALTH SERVICES

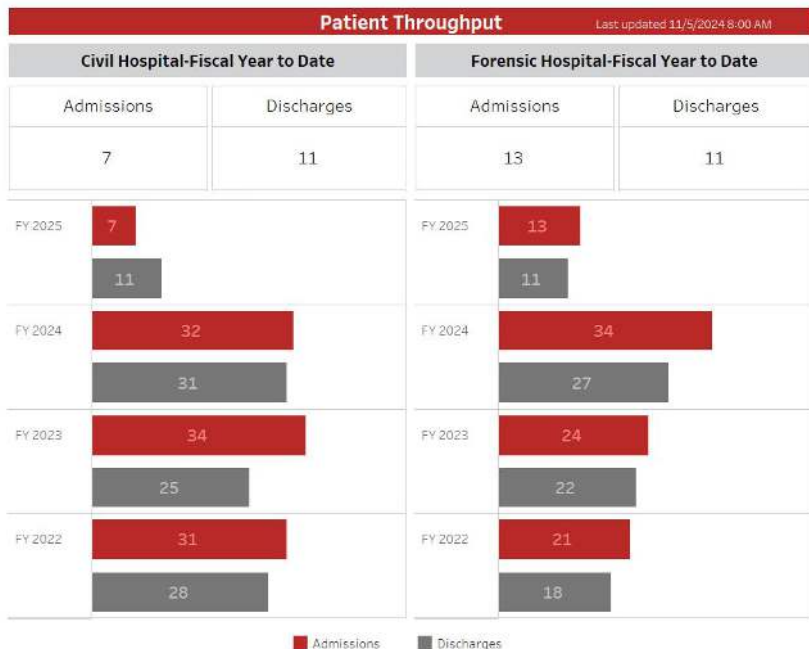
Health and Wellness for all Arizonans

FY24 Highlights and Accomplishments

- [Clinical Improvement and Human Resource Plan](#) (Sept. 1, 2023)
- [Public Dashboard](#) (Jan. 24, 2024)
- Joint Commission Gold Star (re)Accreditation (Sept. 30, 2023)
- Expanded Governing Body (Dec. 1, 2023)
- Increased Collaboration with Community Care Organizations, Health Plans, other State Agencies and Advocacy Groups.
- Various Internal Dashboards for Monitoring Care Delivery
 - Pain Management
 - Falls
 - Complex Discharges
 - Medication Administration
 - Service Hours



Public Dashboard



Note: All admissions to the State Hospital require a court order for involuntary placement pursuant to A.R.S. Title 36 or Title 13. The Hospital coordinates patient discharges with the enrolled Health Plan and their outpatient provider network.

Pending Civil Discharges Last updated 11/5/2024 8:00 AM

| Civil Hospital | | | | |
|--------------------|--------------------------------|-----------------------------|---------------------|--------------|
| Health Plan | Total Discharge-Ready Patients | Avg. Days Pending Discharge | Avg. Length of Stay | Maricopa Cap |
| AZ Complete Health | 1 | 5 days | 1.15 years | No |
| DDD-LTC | 1 | 15 days | 12.70 years | Yes |
| Mercy Care | 1 | 11 days | 258 days | Yes |



**ARIZONA DEPARTMENT
OF HEALTH SERVICES**

Health and Wellness for all Arizonans

FY24 Highlights and Accomplishments

Significant Decreases in All High Risk Categories (FY23 to FY24), including:

- 27% Decrease in the number of Assaults
- 24% Decrease in the number of Seclusion and Restraint Events
- 33% Decrease in Patient Falls
- 46% Decrease in Patient Self-Injurious Events
- 62% Decrease in Medication Variances

Note: FY25 YTD Performance Shows Continued Declines in All Categories.



ARIZONA DEPARTMENT
OF HEALTH SERVICES

Health and Wellness for all Arizonans

Opportunities for Improvement

Looking Forward



ARIZONA DEPARTMENT
OF HEALTH SERVICES

Health and Wellness for all Arizonans

Opportunities for Improvement

- Continue Outreach Efforts with Stakeholders
- Continue to Integrate Community Care Organizations into Inpatient Treatment
 - Outpatient sponsored community outings
- Improved Collaboration with Peer, Family, and Advocacy Groups
- Forensic Risk Assessments - Superior Court Collaborations
- Support the System as able
 - COPA's *Pathways for Hope* (Summer 2025)



Strategic Focus

Five Year Plan



ARIZONA DEPARTMENT
OF HEALTH SERVICES

Health and Wellness for all Arizonans

Strategic Focus

- **Change the 'State Hospital' paradigm**
 - Not the 'end of the road' for psychiatric care; just one stop on the road to recovery
 - ASH's success is dependent on the entire care continuum
- Continue to Implement Evidence Based Practices
 - Dynamic Appraisal of Situational Aggression (DASA)
- Modernize Our Infrastructure
 - EHR
 - Audio/Video Security System Replacement (in progress)
- Expand Clinical Services
- Community Reintegration Unit for Civil Patients
- Complex Medical Care Needs of an Aging Population



Strategic Focus

- Achieve 'Teaching Hospital' Designation (long term goal)
 - Psychiatric Nurse Practitioner rotations beginning January, 2025 (ASU)
 - Expand nursing student rotations to focus on externships (GCU)
 - Expand Residency opportunities under current agreements
 - Identify academic partners for placing students at ASH in other disciplines
 - Rehabilitation / Occupational Therapy
 - Social Work
- Establish our own Residency Program
- Pursue student-volunteer opportunities with academic programs
- We will require administrative expansion to accomplish these objectives.



Thank You!

Michael Sheldon, MPA

Mike.Sheldon@azdhs.gov



ARIZONA DEPARTMENT
OF HEALTH SERVICES

Health and Wellness for all Arizonans